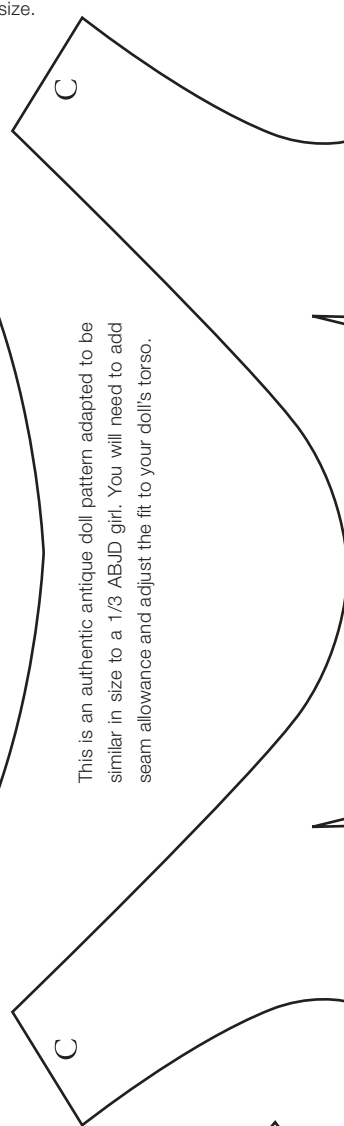




Printing Instructions:

Print this PDF onto lightweight 8.5"x11" paper. Set the page scaling in your printer settings to 100% to ensure the pattern pieces will print at the correct size.



This is an authentic antique doll pattern adapted to be similar in size to a 1/3 ABJD girl. You will need to add seam allowance and adjust the fit to your doll's torso.

