

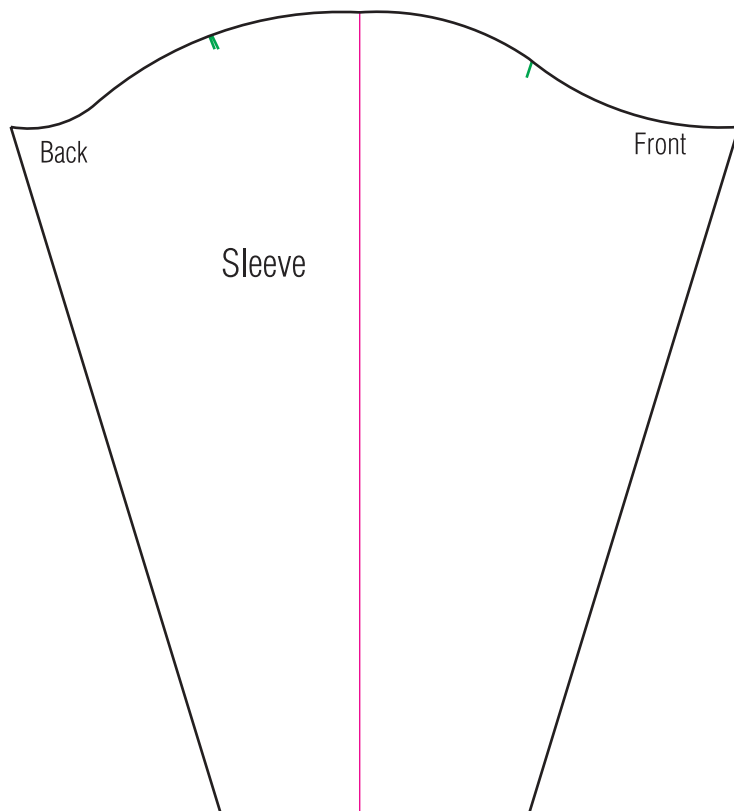
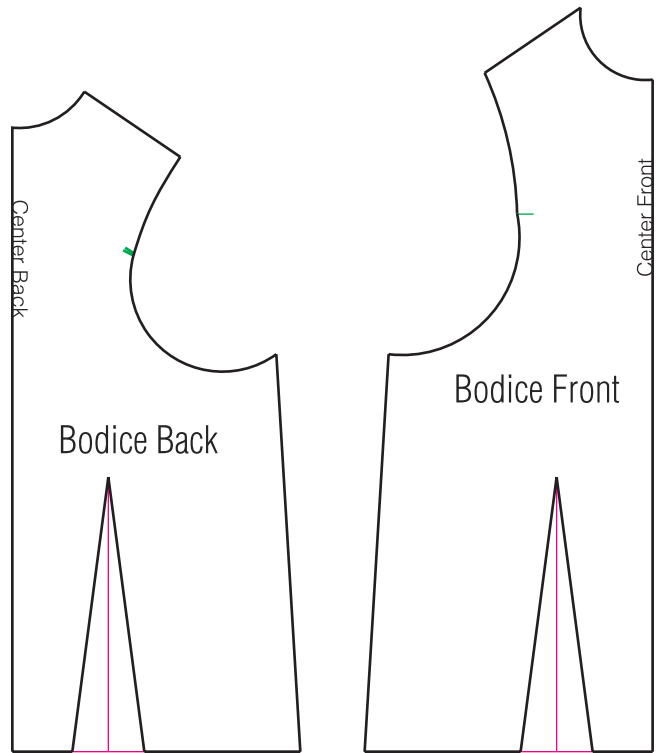


Printing Instructions:

Print this PDF onto lightweight **8.5"x11" Letter size** paper.
Set the page scaling in your printer settings to **100%** to ensure the pieces will print at the correct size.

Pattern Blocks for
17" Slim-Line Fashion Doll
Bodice | Sleeve | Pants

DA: [Fylgjur.deviantart.com](https://www.deviantart.com/fylgjur)
Home: www.Doll-Candy.com



These are **blocks** for developing patterns, and are **not** patterns for finished items. These have been digitally **flat-drafted** and may require draped adjustments.

These pieces do not include seam allowance.

This block was based on measurements for Mattel's **Ever After High**™ Madeline Hatter™ Large Scale Doll (**17"**).

